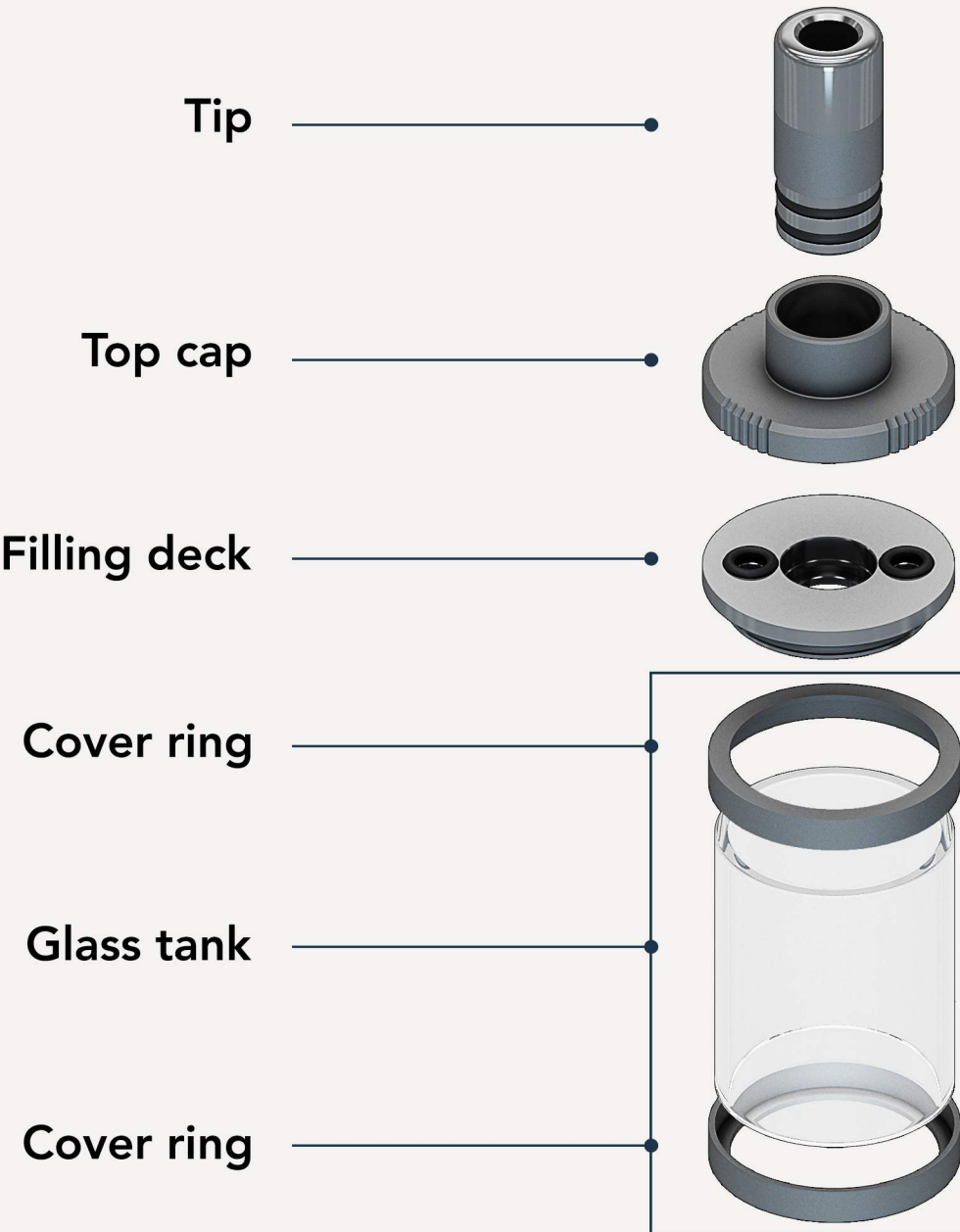
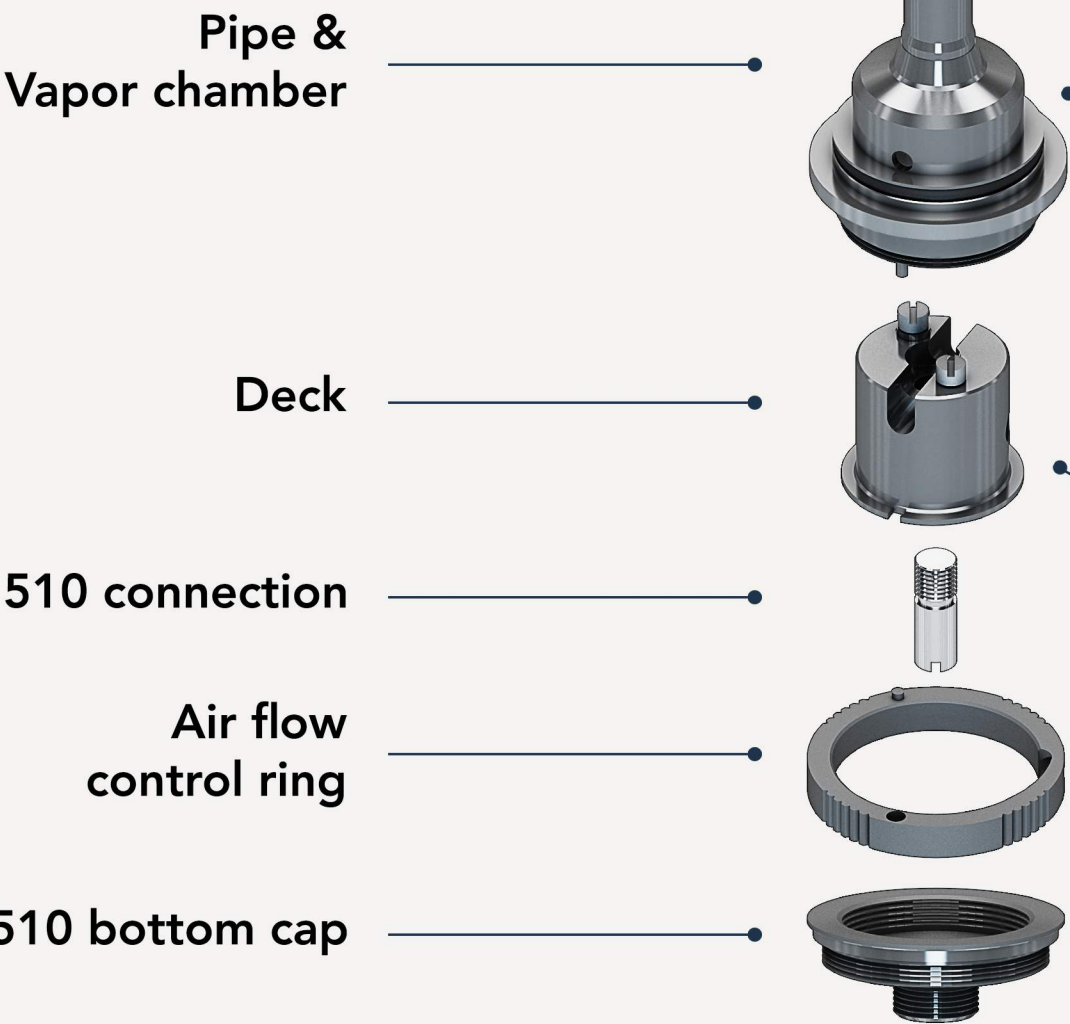
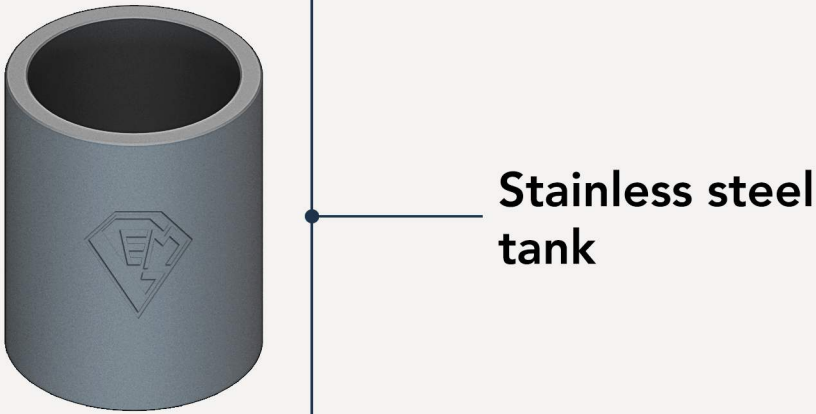


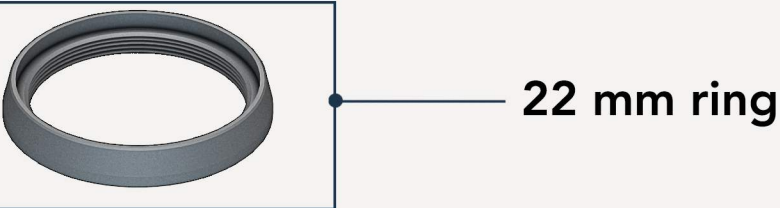
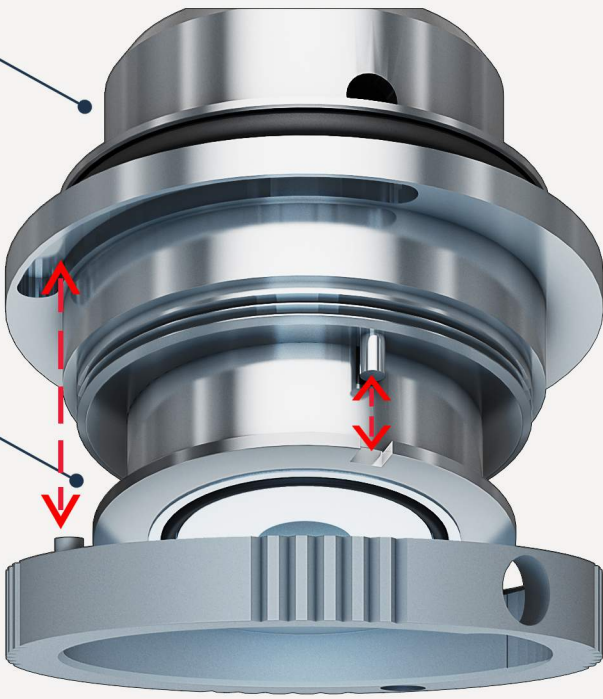
510 mode A



510 mode B



Correct method of assembly

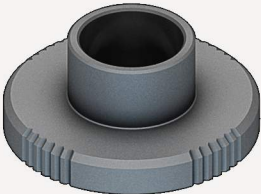


Hybrid mode A

Tip



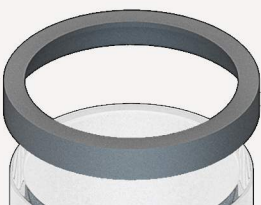
Top cap



Filling deck



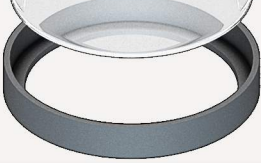
Cover ring



Glass tank



Cover ring



Pipe & Vapor chamber



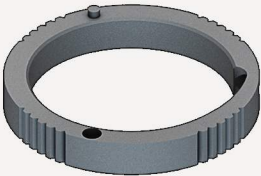
Deck



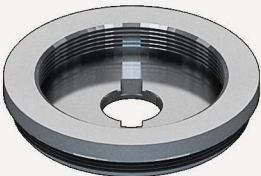
Hybrid connection



Air flow control ring



Hybrid bottom cap

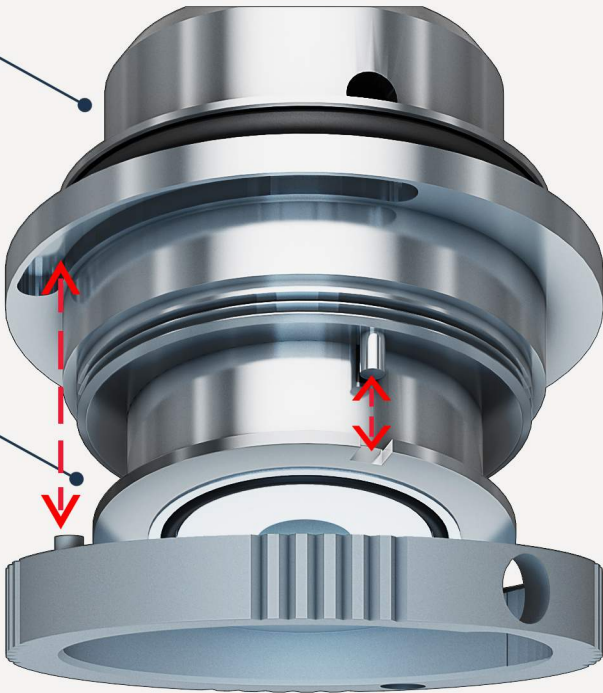


Hybrid mode B

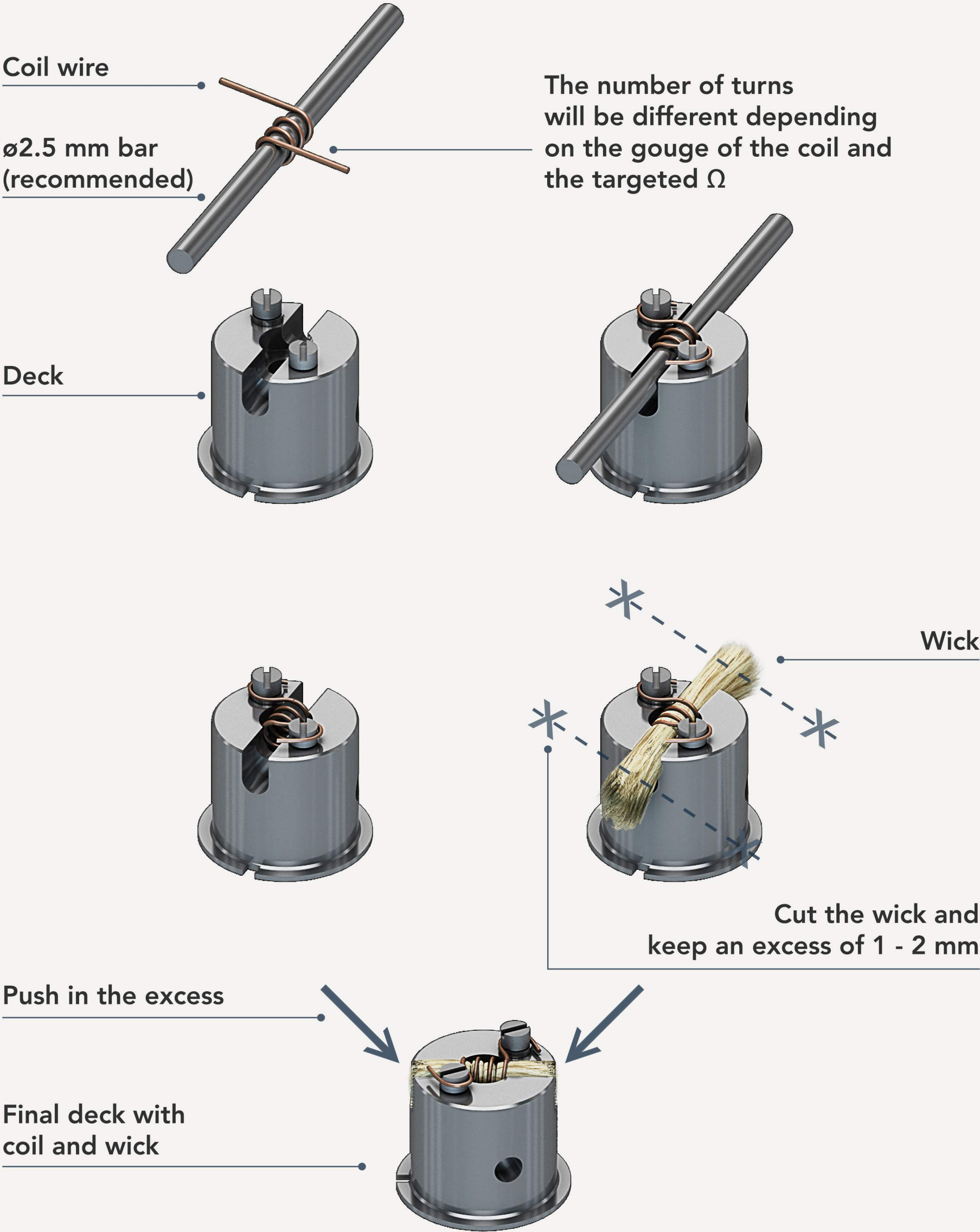
Stainless steel tank



Correct method of assembly



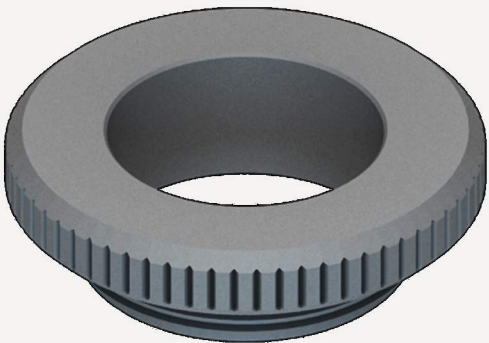




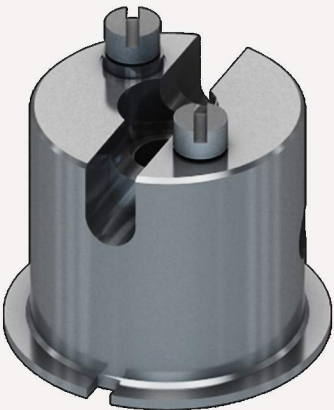
Hybrid mode

510 mode

Dry burn ring



Deck



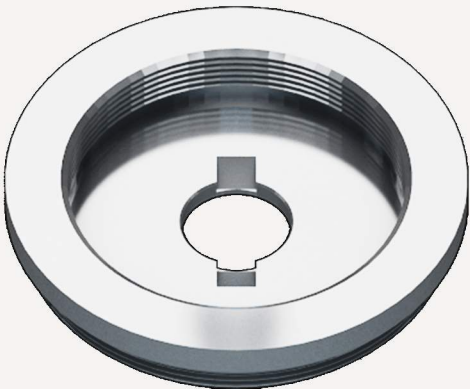
Hybrid connection



510 connection



Hybrid bottom cap

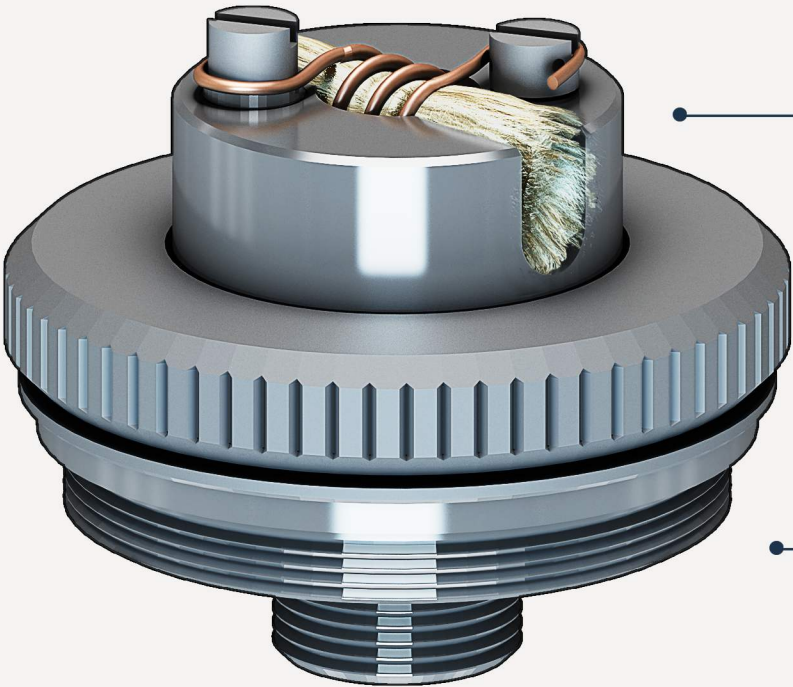


510 bottom cap



Final assembly with coil and wick in 510 mode

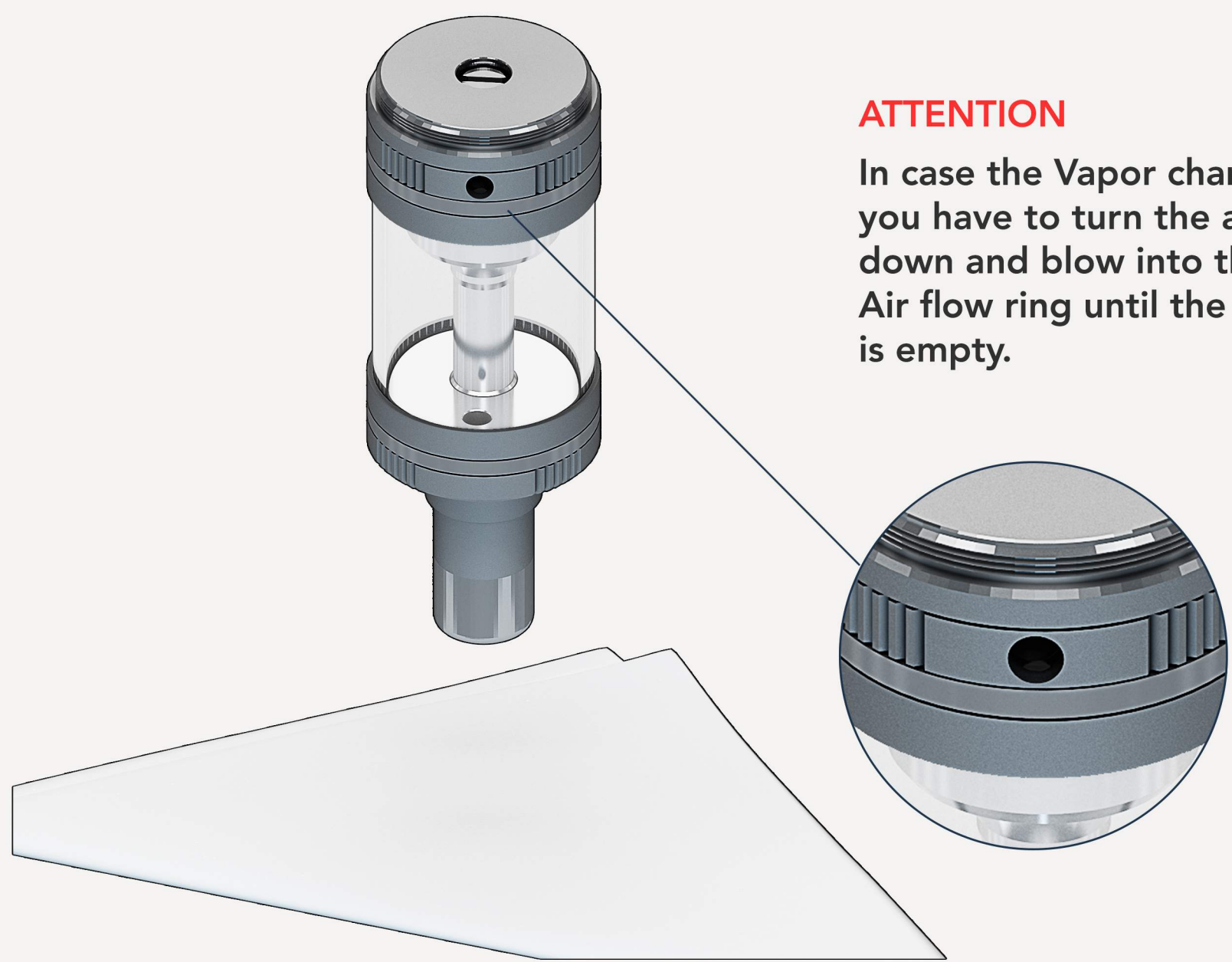
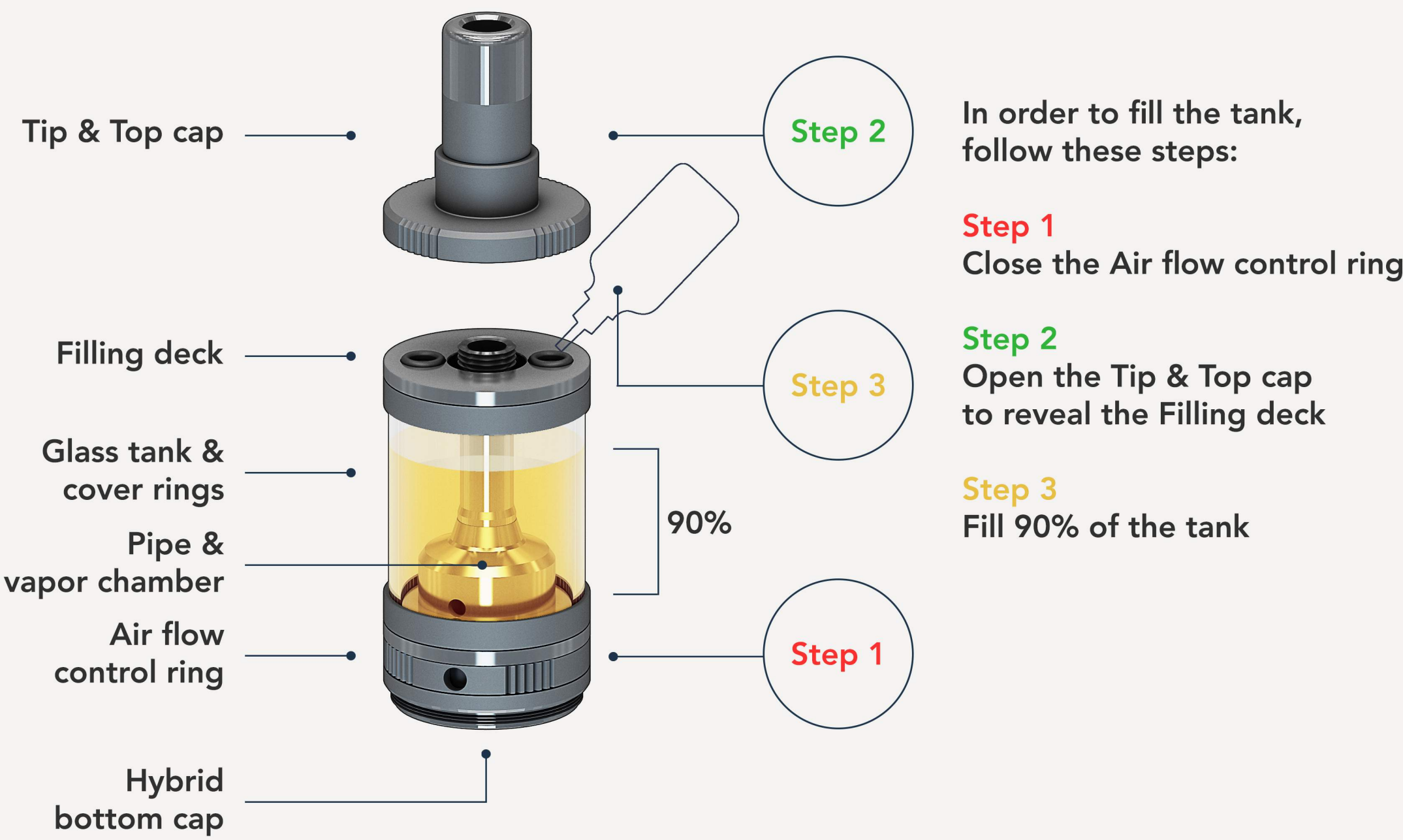
Dry burn ring



Deck with coil and wick

510 bottom cap

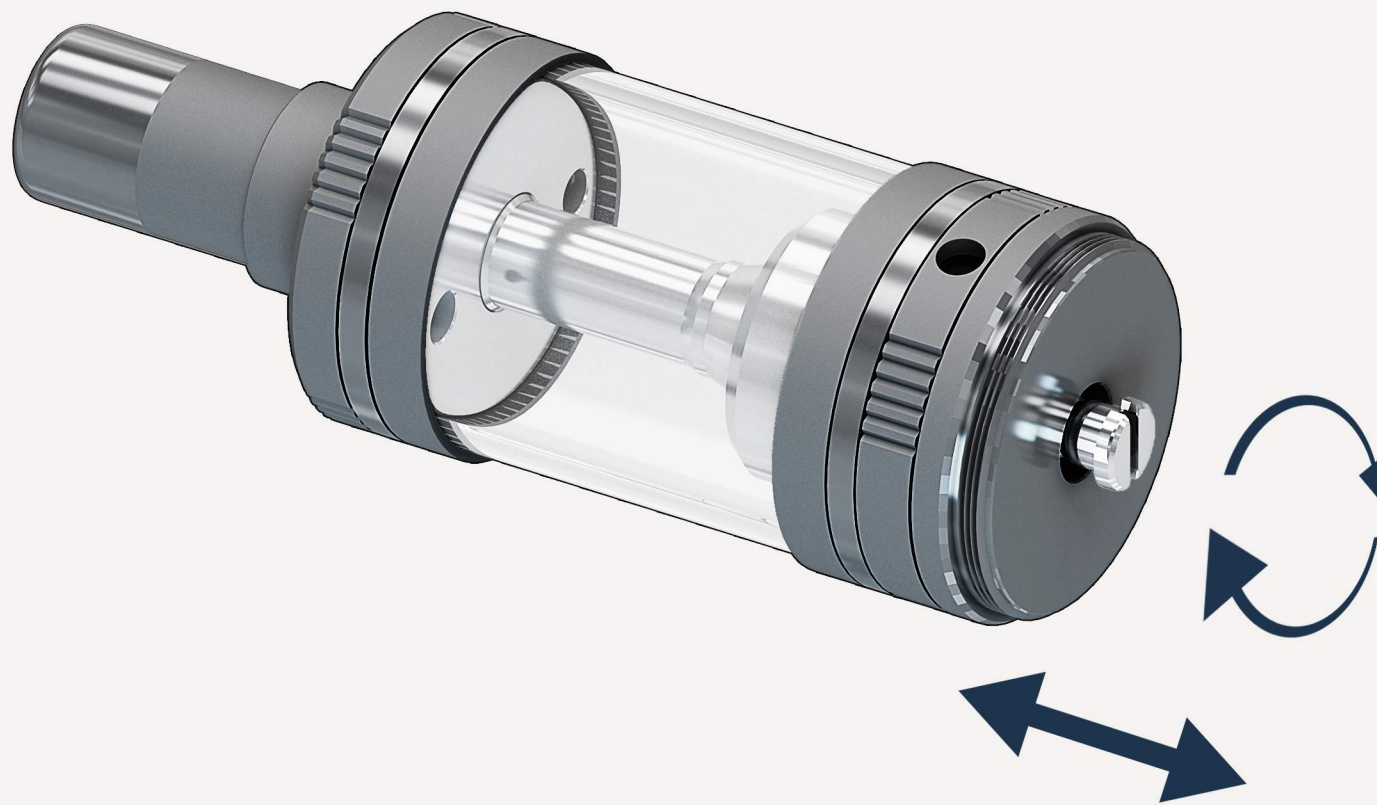




**ATTENTION**

In case the Vapor chamber gets flooded you have to turn the atomiser upside down and blow into the hole on the Air flow ring until the Vapor chamber is empty.

## Hybrid mode A



## 510 mode A

